

# LED**SIGN** BUYER'S **GUIDE**

 **ThinkSIGN**  
IT'S SO **EASY**





DERBY  CITY  
G A M I N G



Where it all  
**began**



# 25 YEARS

DESIGNING & MANUFACTURING  
OUTDOOR LED SIGNS

Louisville, KY

A nighttime photograph of the Louisville, Kentucky skyline. The central focus is the illuminated dome of the Kentucky State Capitol building, which is lit with a warm yellow light. To its left and right are several modern skyscrapers with lit windows, some of which are also illuminated with blue and green lights. The sky is a deep blue, and the overall scene is a vibrant display of city lights.



# The Best **Performance**



The kids and parents love our sign. We promote events and recognize individuals' achievements lit up for all to see, which is amazing for our community. We even use it to direct carpool and parking which keeps things running smoothly.

**- Denise B.**  
Principle

## Superior Quality

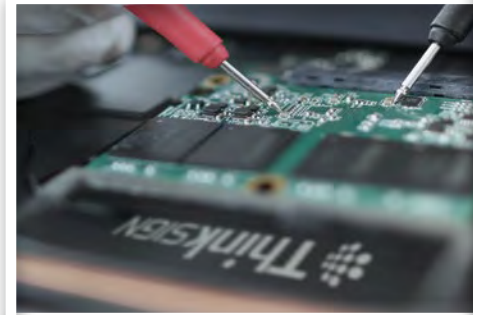
We are an **Original Design Manufacturer (ODM)** with end-to-end control of every detail of our signs. Our founder is our Chief Engineer. Your ThinkSIGN is incredibly reliable, lasting over 10 years, with ultimate image quality and energy efficiency.

## Industry Leading Software

We make creating powerful, engaging content for your sign easy. Our proprietary Studio Cloud is the **industry's first full function, fully mobile EMC software**. Design, edit, and schedule content in minutes from any device, anywhere you are.

## Unbeatable Support

Where others have third-party call centers, our support technicians are in-house engineers. Whether it's a live demo, technical support, or field assistance, we have the utmost commitment to serving our partners and end users.





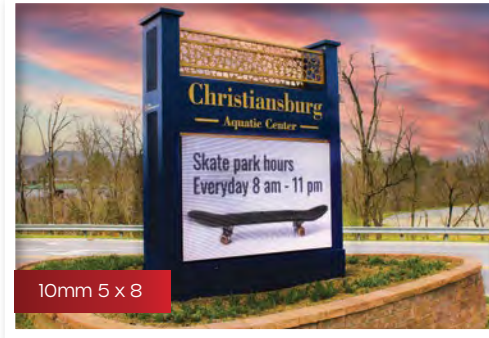
10mm - 15 x 10



10mm - 30 x 10



10mm 4x6



10mm 5 x 8





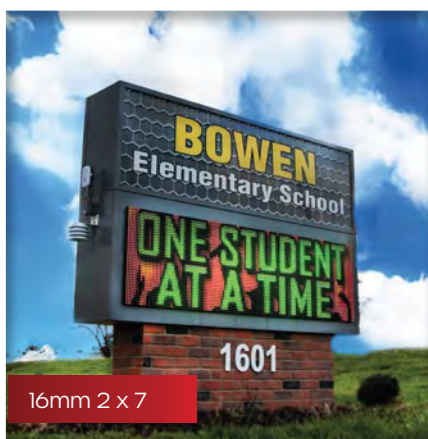
10mm 10 x 8



16mm 9 x 16



10mm 4 x 8



16mm 2 x 7



10mm 8 x 16



10mm 7 x 24

# We Design

## Long Lasting **Signs**

Each and every LED is gold soldered and sealed in silicon right in our factory, so that year after year and against heat, ice, water, and wind, your ThinkSIGN EMC will continue to stand as a powerful beacon for your message and your ROI will continue to grow.

## Easy, Intuitive **Software**

Rather than third-party software, we've spent over a decade designing and innovating our own, proprietary EMC software to be the best, most effective way to work with your sign.

## Exemplary **Support**

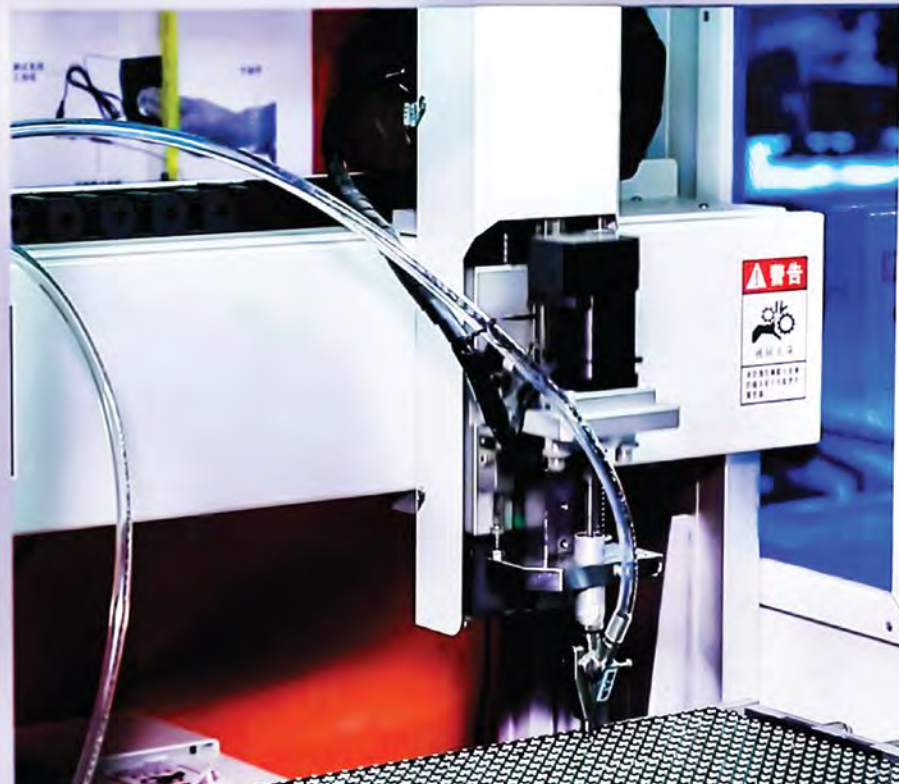
Only a true ODM like ThinkSIGN can protect you from parts obsolescence. In a sea of resellers, the greatest risk is, because third-parties do not design and manufacture their own components, they can't guarantee future parts. With first-party everything, ThinkSIGN always has what it takes to keep your sign running.







 **ThinkSIGN**



# We Manufacture

When you invest in a ThinkSIGN EMC, you can rest assured that you are making a low-risk investment that will pay off for many years to come. That's because, as a true ODM, our end-to-end process affords us incredibly valuable benefits like:



## Superior **Sourcing**

We're there, boots on the ground, selecting with an expert eye materials that are second to none.



## End-to-End **Control**

Unlike resellers, we control design, production, and support of every component of every sign. Our 25 years of our know-how is your peace of mind. So, if you need any service or upgrade, we can always precisely meet your needs.



## Software **Design**

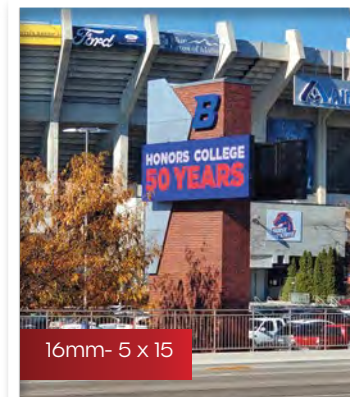
The easiest EMC software you'll find anywhere. It's full function, fully mobile, from any device, with nothing to download. Works seamlessly with our signs because, well, we created it!



## First-Party **Everything**

Excellence - That's our only standard. By designing and manufacturing everything ourselves, we ensure quality, consistent performance and leave nothing to chance.

# Our Gallery







6mm 6 x 12



10mm 4 x 8



6mm 3 x 8



10mm 3 x 7



16mm 6 x 15

The Industry's Best

# EMC Software



- First and only full function mobile software for LED Signs
- Easiest to use - Quick, convenient, intuitive features
- Supports Mac, Windows, iOS, Android
- Proprietary cloud software design offers unparalleled experience
- No setup necessary



\*Offline version available

# MARGARTAVILLE

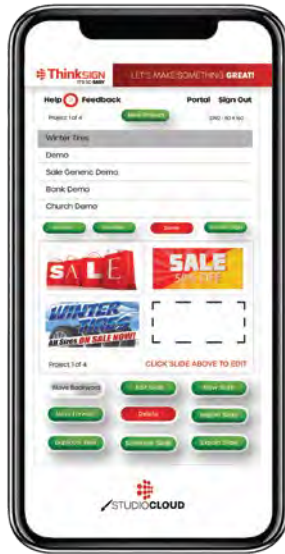
YOU WANNA  
PIZZA THIS?





Start...Edit...**Sync**

# Value in **Simplicity**



Change content in a **minute...**

We Make Your Job

# Easy

**Over 100 curated fonts**

Add text effects with a click!

**Full library of animations**

to bring life to your design

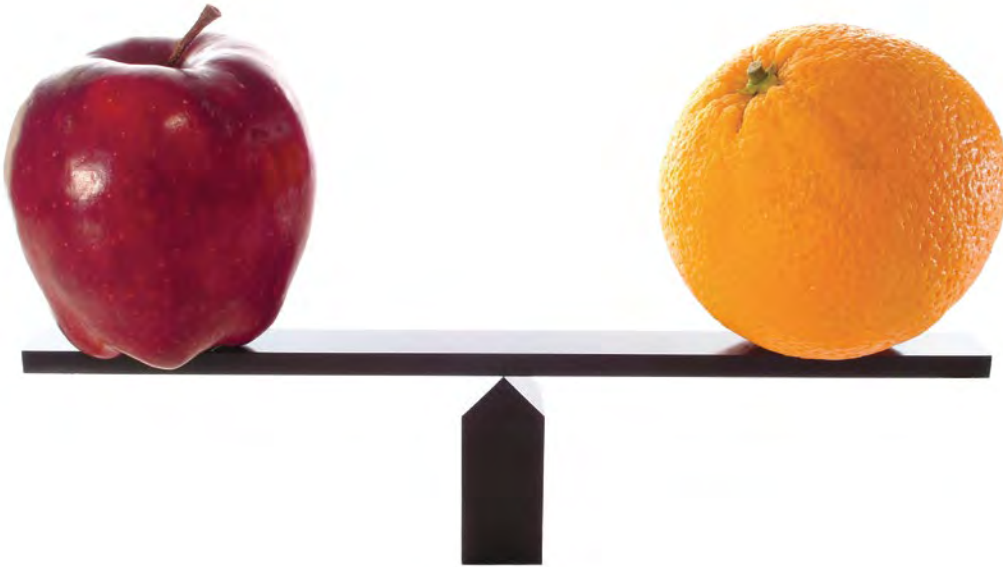
**Choose from thousands**

of photos and illustrations



No designer? **No problem!**

Software is the  
**Soul of Your Sign**



**Compare** before you buy

**More than half**  
a sign's value  
is its software.

When you buy an EMC, you're stuck with **manufacture's software**. And that software is the **ONLY** way you interact with your sign...for the life of the sign.

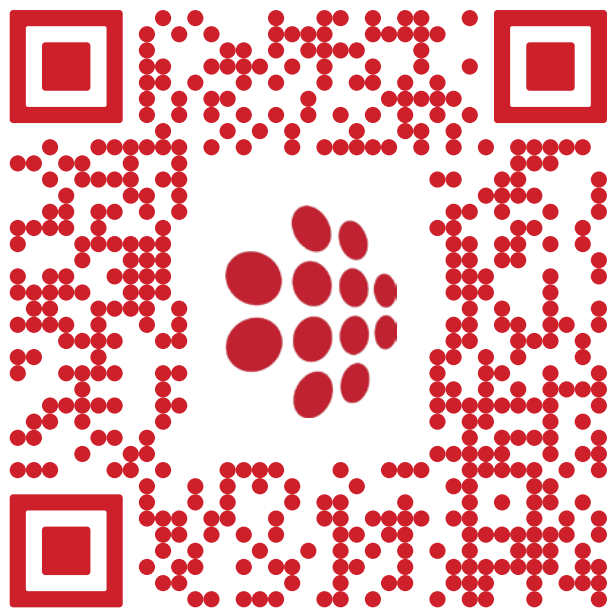
It could be a bad experience that lasts.

We highly recommend that you compare software before making such an important investment.



**8 out of 10** people who  
compare software  
chose ThinkSIGN.  **8/10**





Try our software **now**

"The **simplicity & capabilities** of the software were the deciding factor."

-Daniel Lee

**Woody Anderson Ford**



A Good Sign For Your

**ROI**



# Choosing the Right Sign

more pixels = more detail

20mm



Increase in  
**Pixels**

16mm



**+56%**  
more than 20mm

13mm



**+45%**  
more than 16mm

10mm



**+77%**  
more than 13mm

6mm



**+125%**  
more than 10mm

## Resolution Made Easy

You know when you zoom in on a photo and it gets blurry pretty quickly? And then with another photo, you can zoom in on a baby's eyelash and it stays super crisp? **That's resolution** - the higher the resolution, the more detail in the image. But if you're never going to zoom in, the picture looks fine as it is. That's basically how to choose a sign - The closer to your sign the audience will be, the more detail you'll need.

The higher the resolution  
**the greater the value**





Seeing is  
**Believing**

Schedule your demo today  
Get answers, **face-to-face**.

Just **call us**   
877.767.9949



# A Lifetime of **Support**



**“Every time** I call for assistance, I get a resolution and great customer service! Their techs are professional engineers. And I always learn new things to make my content better.”

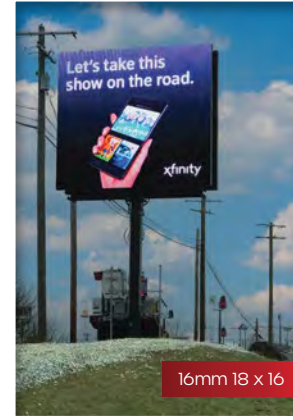
Sydney K.



10mm 4 x 6



16mm 3 x 7



16mm 18 x 16



10mm 3 x 7



16mm 8 x 16





 **ThinkSIGN**  
IT'S SO **EASY**

877.767.9949  
[marketing@thinkSIGN.com](mailto:marketing@thinkSIGN.com)

